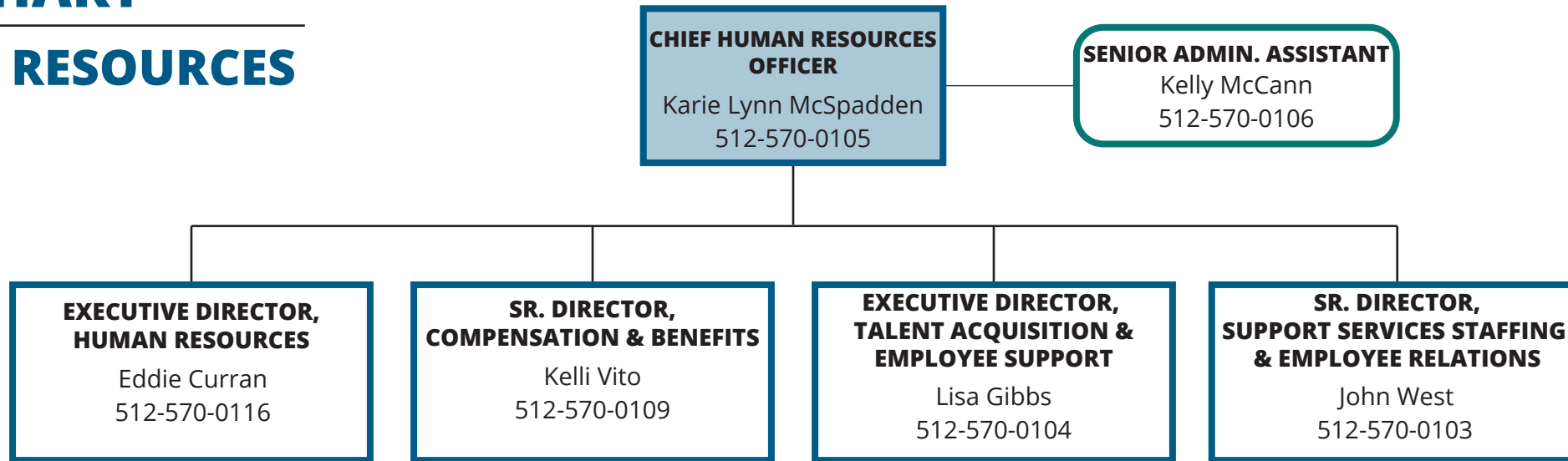


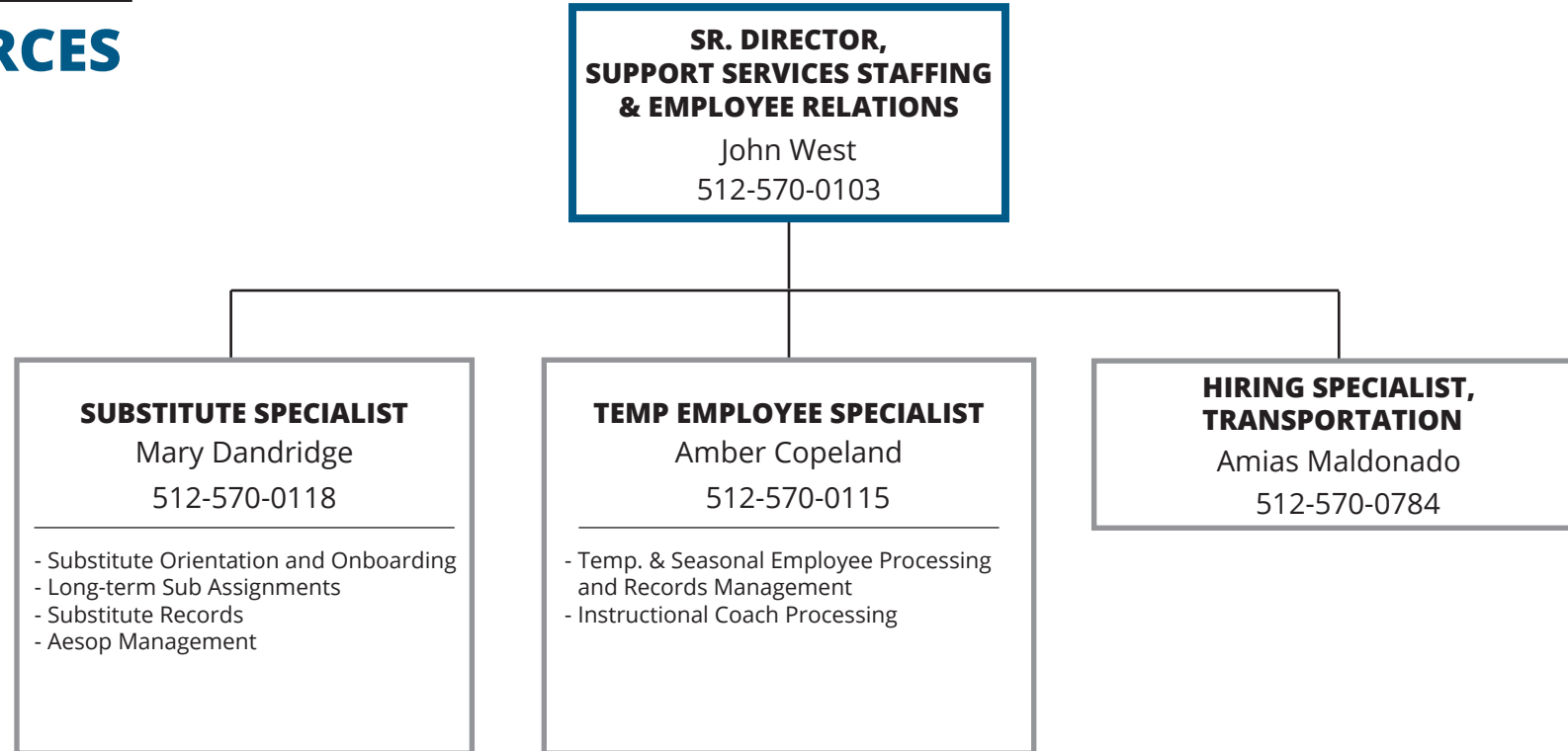
ORGANIZATIONAL CHART

HUMAN RESOURCES



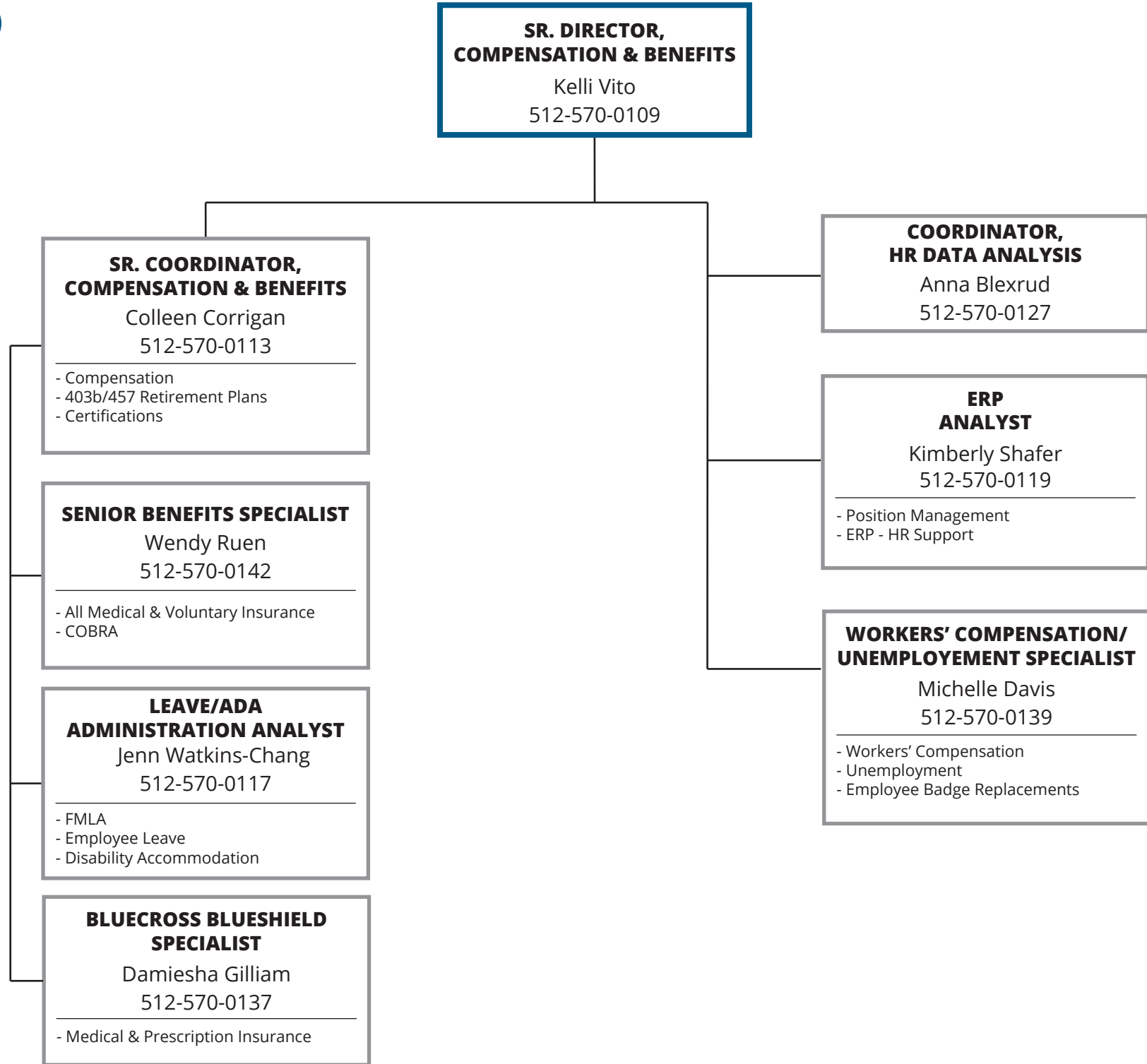
ORGANIZATIONAL CHART

HUMAN RESOURCES



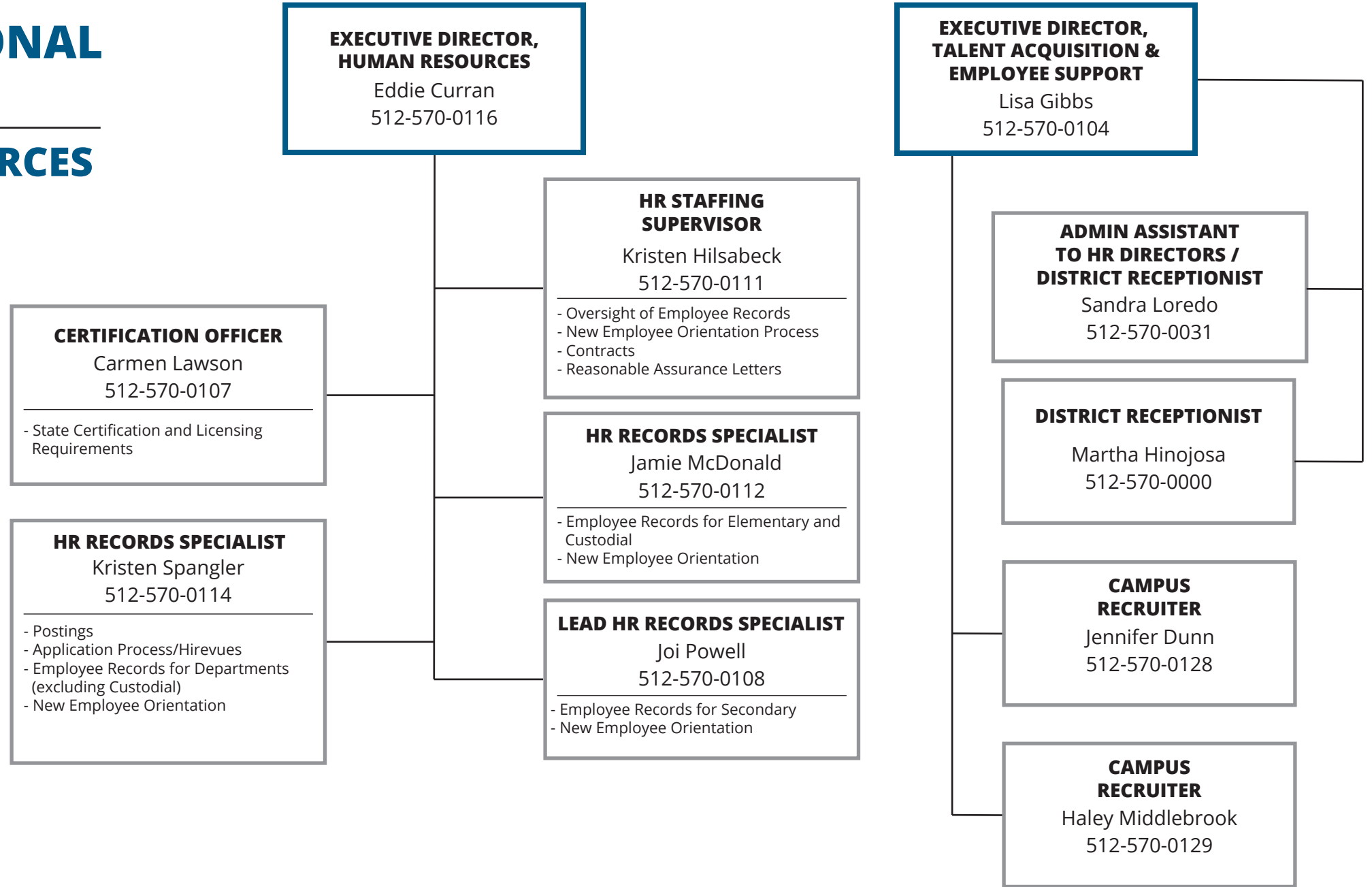
ORGANIZATIONAL CHART

HUMAN RESOURCES



ORGANIZATIONAL CHART

HUMAN RESOURCES



**EXECUTIVE DIRECTOR,
HUMAN RESOURCES**
Eddie Curran
512-570-0116

**EXECUTIVE DIRECTOR,
TALENT ACQUISITION &
EMPLOYEE SUPPORT**
Lisa Gibbs
512-570-0104

CERTIFICATION OFFICER
Carmen Lawson
512-570-0107
- State Certification and Licensing Requirements

HR STAFFING SUPERVISOR
Kristen Hilsabeck
512-570-0111
- Oversight of Employee Records
- New Employee Orientation Process
- Contracts
- Reasonable Assurance Letters

HR RECORDS SPECIALIST
Jamie McDonald
512-570-0112
- Employee Records for Elementary and Custodial
- New Employee Orientation

HR RECORDS SPECIALIST
Kristen Spangler
512-570-0114
- Postings
- Application Process/Hirevues
- Employee Records for Departments (excluding Custodial)
- New Employee Orientation

LEAD HR RECORDS SPECIALIST
Joi Powell
512-570-0108
- Employee Records for Secondary
- New Employee Orientation

ADMIN ASSISTANT TO HR DIRECTORS / DISTRICT RECEPTIONIST
Sandra Loreda
512-570-0031

DISTRICT RECEPTIONIST
Martha Hinojosa
512-570-0000

CAMPUS RECRUITER
Jennifer Dunn
512-570-0128

CAMPUS RECRUITER
Haley Middlebrook
512-570-0129